

For product information and support, visit  
[www.philips.com/dictation](http://www.philips.com/dictation)

# SPEECHLIVE

PCL1000

PCL1100



---

EN Quick start guide for authors

---



## Philips SpeechLive – Quick Start Guide for Authors

Dear customer,

Thank you for choosing Philips SpeechLive as your cloud based dictation workflow solution.

This guide gives you instructions on how to activate and configure your SpeechLive access. Please follow the instructions in this document only if you have received an invitation email from the SpeechLive system. The invitation email has the subject "You have been invited to use Philips SpeechLive".

### Contents

1. INSTALL THE SOFTWARE .....	1
SMARTPHONE USERS.....	1
FOR DESKTOP COMPUTERS .....	2
2. ACTIVATE YOUR SPEECHLIVE USER ACCOUNT.....	2
INVITATION EMAIL .....	2
ACTIVATION PAGE.....	2
3. CONNECT YOUR APPLICATION.....	3
SMARTPHONE.....	3
DESKTOP COMPUTER .....	4
Automatic configuration .....	4
Manual configuration (optional).....	5
RELATED INFORMATION .....	5

### 1. Install the software

As a SpeechLive author you can create dictations on your smartphone device (Android or iPhone) or on your desktop computer. Your dictations will be securely stored in the SpeechDrive of your SpeechLive user account.

#### Smartphone users

**Before activating** your SpeechLive user account please make sure that you have installed the latest Philips dictation recorder app on your smartphone.

You can download the corresponding app from the links below.





## For desktop computers

Before activating your SpeechLive user account please [make sure](#) that you have [installed](#) the Philips SpeechExec Pro Dictate 8.1 software or later.

You can download the SpeechExec software from the link below:

[Download SpeechExec Pro Dictate](#)

**Note:** For SpeechExec software you need to have a valid license key available. License keys can be ordered in the SpeechLive online shop or at your preferred SpeechLive partner.

## 2. Activate your SpeechLive user account

### Invitation email

Open the invitation **email** that you have received from the SpeechLive system and click on the activation link mentioned in the Step 2 of the email:

#### ② Activate

After you have installed the software click on the link below and follow the instructions on the web page:

[Activation link](#)

**Note:** If you cannot click on the link please copy the link into your browser's address bar and press the enter button on your keyboard!

### Activation page

For security reasons you will be forwarded to a website where you have to define a password for your SpeechLive user account (your e-mail address is filled in automatically):

- 1 Type in your password
- 2 Confirm your password by entering it a second time
- 3 Click on the **Accept invitation** button.

**Note:** the activation page might look slightly different when activating the account via a smartphone.

Welcome John Doe!

You have been invited to access a SpeechExec Live account.  
To accept the invitation and finalize your activation process, specify your SpeechExec Live password below, confirm it, and click 'Accept invitation'.

Email john.doe@speech.com

Password  ①

Confirm password  ②

③

The final step is to connect your dictation application with your SpeechLive user account

- To connect your [smartphone](#) please follow the chapter [Smartphone](#)
- To connect your [computer](#) please follow the chapter [Desktop computer](#).

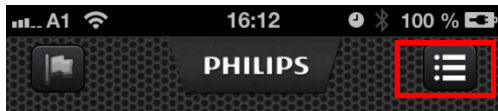
### 3. Connect your application

#### Smartphone

To connect your smartphone to your SpeechLive user account, please follow the steps below

#### Configuration

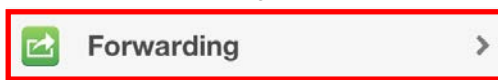
1. Click on dictation list



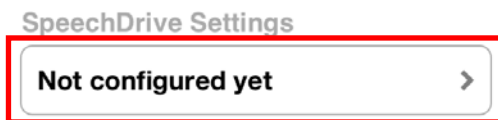
2. Click on settings



3. Click on 'Forwarding'



4. Click on 'SpeechDrive settings'



5. Click on 'Use SpeechDrive'



6. Enter email address and password of your SpeechLive user account and click 'Done'

**SpeechDrive Login**

Cancel
Done

7. A green checkmark shows that you are now connected to the SpeechDrive of your

#### Utilization

To send your dictations to your SpeechDrive click on (Forwarding) and select 'SpeechDrive'





SpeechLive user account

 Use SpeechDrive

## Desktop computer

### Automatic configuration

After clicking 'Accept invitation' you are informed that you have successfully activated your SpeechLive user account.

Please follow the steps below:

- Click on 'Start SpeechExec configuration' to start the SpeechExec configuration wizard.

You have successfully activated your SpeechLive user account (John Doe ([john.doe@speech.com](mailto:john.doe@speech.com))) !

Click the button below to start SpeechExec and connect you to SpeechLive.

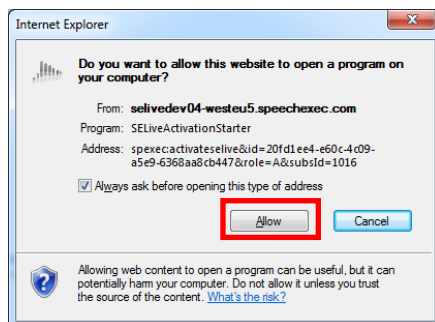
For manual configuration of your SpeechLive user account, refer to the [SpeechLive Configuration Guide](#)



User manual

Your Philips SpeechLive team


- You will be asked to allow this website to open a program on your computer
- Click 'Allow'



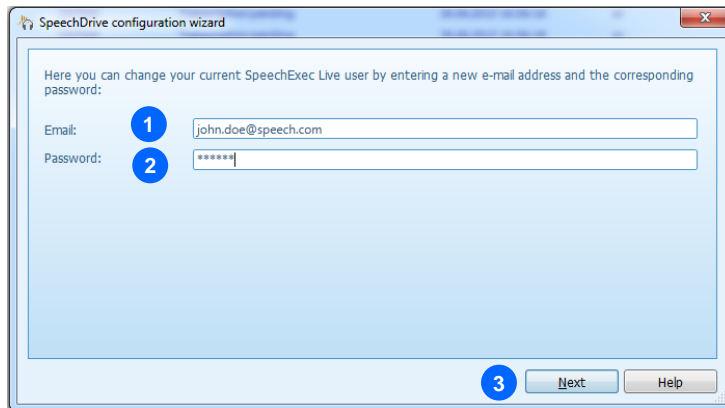
- Your SpeechExec software starts up and automatically connects to your SpeechDrive!

Congratulations you are connected to your SpeechDrive!

## Manual configuration (optional)

Alternatively you can also configure your SpeechLive access in your SpeechExec Pro Dictate software manually. Therefore open the SpeechExec dictation software installed on your computer and click the  (Start my SpeechDrive) button in the toolbar.

- 1 Type in your e-mail address
- 2 Type in your password
- 3 Click "Next"



Congratulations you are connected to your SpeechDrive!

More information about SpeechDrive configuration options can be found the SpeechExec user manual or in the SpeechExec online help.

## Related information

More information for SpeechExec Pro Dictate can be found in the user manual for [SpeechExec Pro Dictate](#)